



Acalanes Union High School District

# Transition from At-Large to By-Trustee Area Elections

## Information, Questions & Answers

September 10, 2025

*We educate every student to excel and contribute in a global society.*

# Why Transition Now?



The District received a “demand letter” alleging that the District’s at-large election method violates the California Voting Rights Act and threatening litigation.

*(Note: AUHSD currently has 5 Governing Board members who are elected through an at-large election method)*

What is the California Voting Rights Act (“CVRA”)?

- Took effect January 1, 2003
- Prohibits the use of “at-large” elections when such an election system:

“impairs the ability of a protected class to elect candidates of its choice or its ability to influence the outcome of an election....”

*(Elections Code §14027)*

# Protected Class



What is a “protected class?”

A class of voters who are members of a **race, color, or language minority group**, as this class is referenced and defined in the federal Voting Rights Act of 1965 (52 U.S.C. Sec. 10301 et seq.).

*(Elections Code §14026(d).)*

# What is a “By-Trustee Area” Election System?



- Only safe harbor from a CVRA claim
- School district is divided into trustee areas - 5 trustee areas for AUHSD
- A governing board member is elected from each trustee area
- Board members are elected **by only the registered voters in the particular trustee area** in which the governing board member resides

# Keep in mind...



- With a total population of 119,039, **each AUHSD Trustee Area will include approximately 23,808 people.** *(Based on 2020 Census)*
- The difference between the largest and smallest trustee areas can be no more than 10%.
- Census Blocks are the smallest geographic unit used by the U.S. Census Bureau to collect and publish data.
- Census Blocks generally are not to be “split” with a Trustee Area boundary line – since we would lose the accuracy of the population balancing count.’
- Census Blocks vary significantly in shape, size, and population totals – approximately 1,100 Census blocks in the District.

# What is the process to transition...



- The process for transition is set forth in California Elections Code § 10010
- The District has 90 days to complete the process
- Two public hearings must take place prior to the development of draft trustee area maps (Aug 6 & 20)
- Three public hearings must take place after draft maps are published (Sept 3, 17 & Oct 15)
- Draft maps and revised draft maps must be published 7 days prior to public hearings
- The Board's decision regarding maps and the election sequence (Oct 15) shall give consideration to the purposes of the CVRA

# Keep in mind...



- **Does not** change overall District boundaries
- **Does not** change school attendance boundaries
- **Does not** change how the District is governed:
  - The Board “believes that its primary responsibility is to act in the best interests of every student in the district.” (BB 9005)
  - Each Board member, regardless of the trustee area in which they reside, still owes fiduciary duty to entire District
  - Still one District with common goals and challenges!

# Providing Input to the Board...



- Attend Public Hearings (9/17 and 10/15) and provide input
- Provide written input: Please submit your comments, feedback or any questions to [trusteeareafeedback@auhsdschools.org](mailto:trusteeareafeedback@auhsdschools.org).
- You may also comment by telephone at (925) 942-9649.

*All map preference feedback will be relayed to the Board prior to its discussion and adoption of a map option. Input will be considered public record.*



# AUHSD Demographics...

## 2020 Census Data

Population	Total Population		Age 18 +	
	Total	%	Total	%
Hispanic/Latino	10,870	9.1%	7,814	8.2%
White	79,149	66.5%	66,087	69.4%
Black/ African American	1,872	1.6%	1,549	1.6%
American Indian/Alaska Native	116	0.1%	100	0.1%
Asian	18,211	15.3%	14,665	15.4%
Native Hawaiian/ Pacific Islander	169	0.1%	148	0.2%
Other	740	0.6%	542	0.6%
Two or More Races	7,912	6.6%	4,313	4.5%
<b>Total Population</b>	<b>119,039</b>	<b>100%</b>	<b>95,218</b>	<b>100%</b>

## 2019-2023 CVAP Estimates



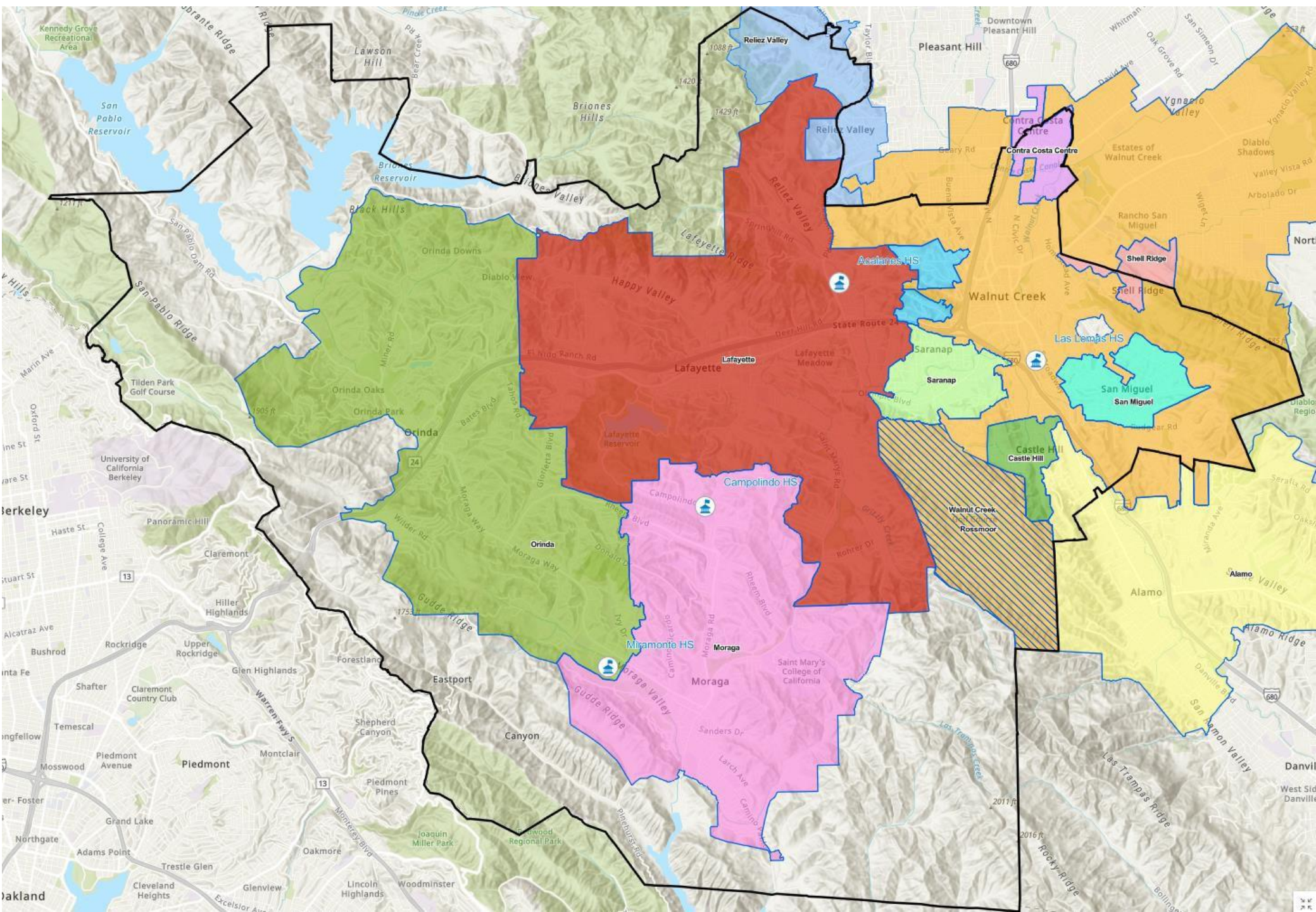
Population	2019-2023 <sup>[1]</sup>	
	Total	%
Hispanic/Latino	7,258	8.3%
White	64,173	73.3%
Black/ African American	1,545	1.8%
American Indian/Alaska Native	146	0.2%
Asian	11,155	12.7%
Native Hawaiian/ Pacific Islander	75	0.1%
Two or More Races	3,219	3.7%
<b>Total Population</b>	<b>87,571</b>	<b>100%</b>

<sup>[1]</sup> CVAP data taken from the California Statewide Database which provides the 2019-2023 American Community Survey CVAP estimates with DOJ by 2020 Census blocks and adjustment to reallocate incarcerated persons to their last known residential address.





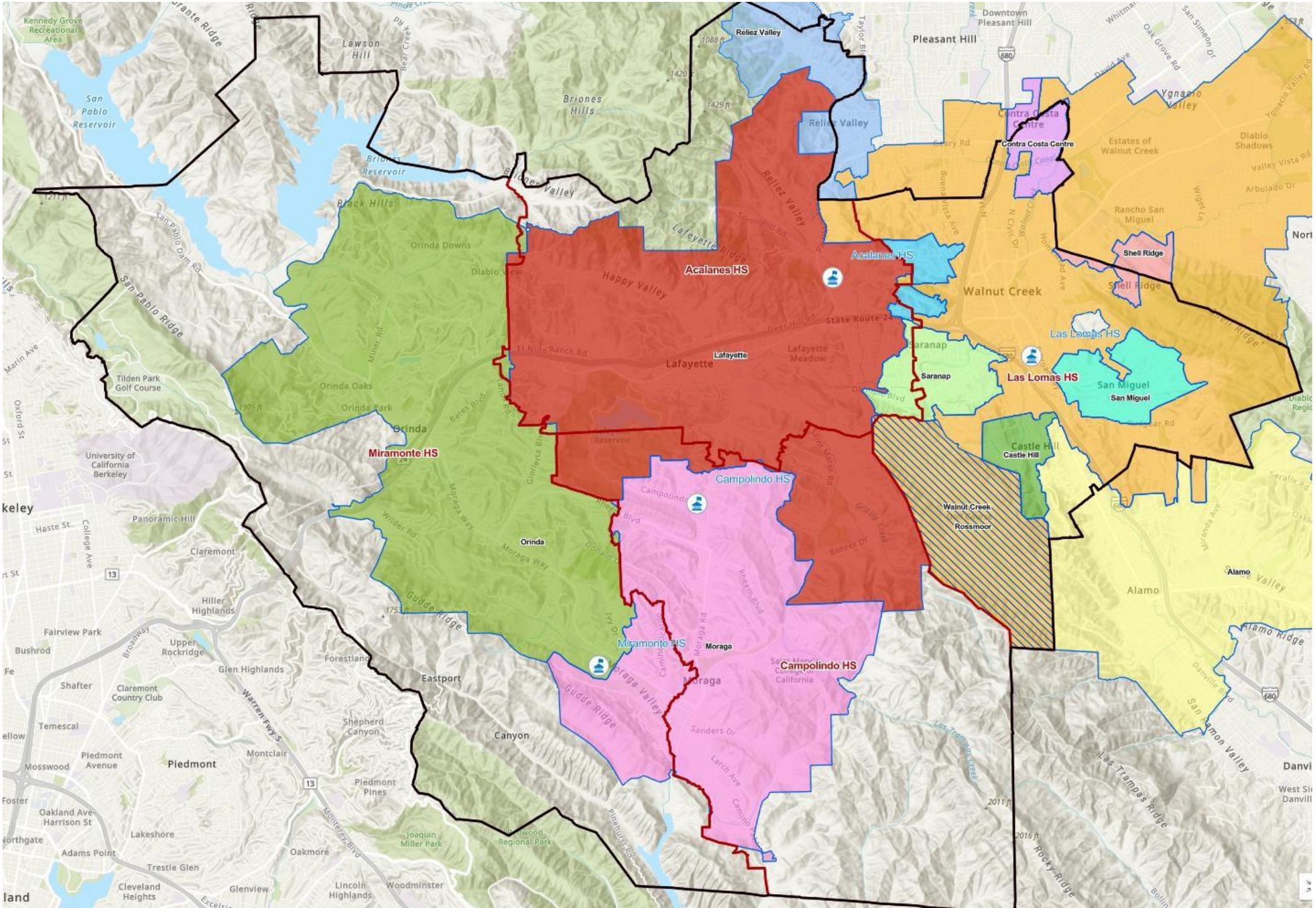
# Cities, CDPs







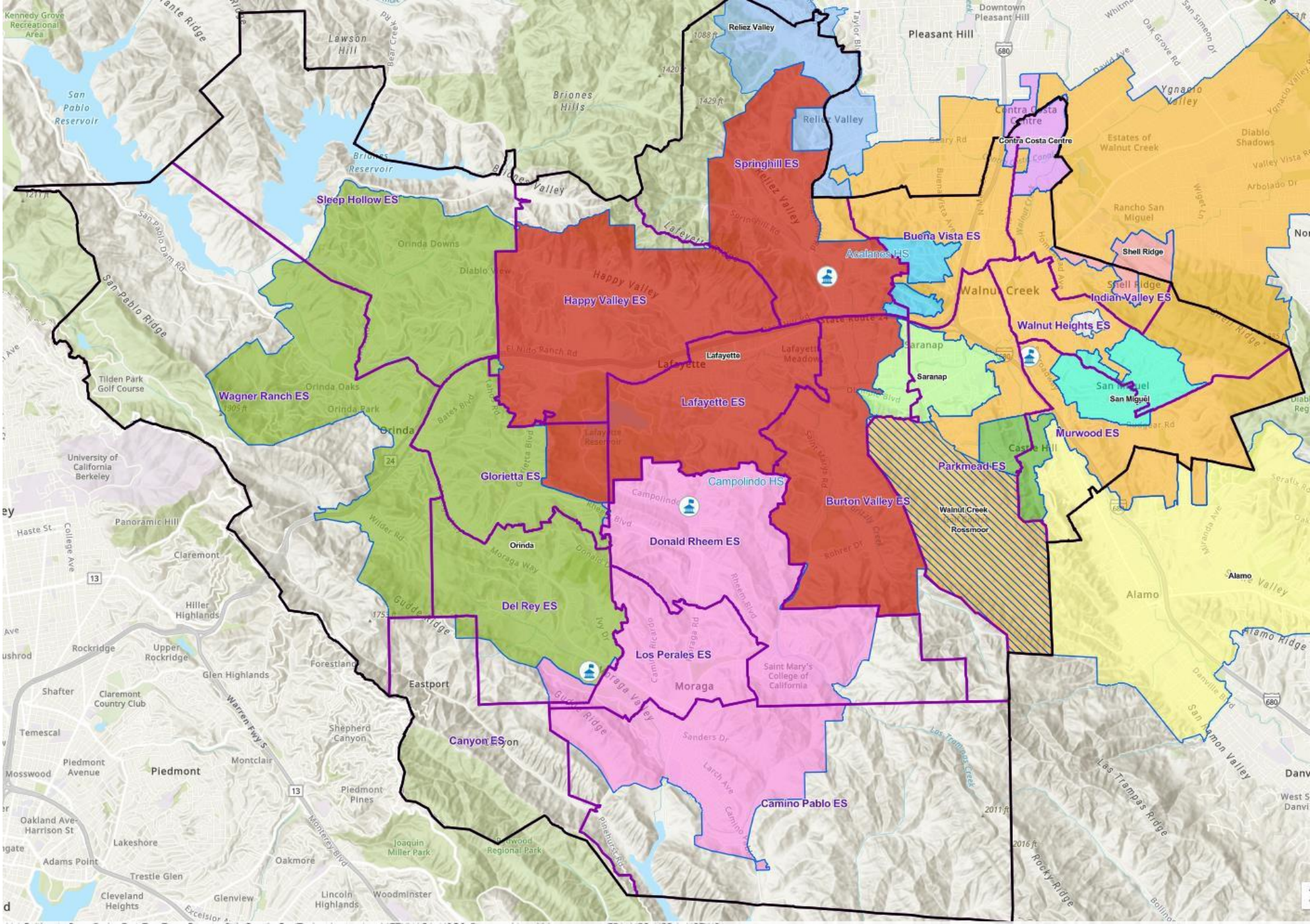
# Cities, CDPs, & HS Areas







# Cities, CDPs, & ES Areas





# Criteria for Consideration



- Comply with the **U.S. Constitution**.
- Comply with the **California Constitution**.
- Population Balance:
  - Each area shall contain nearly equal number of inhabitants
- Comply with the federal **Voting Rights Act**:
  - Determine whether it is possible to create an election district or districts in which a minority group is sufficiently large and geographically compact to constitute a majority in a single-member district.

# Criteria for Consideration



## **AB 764 / Elections Code § 21130**

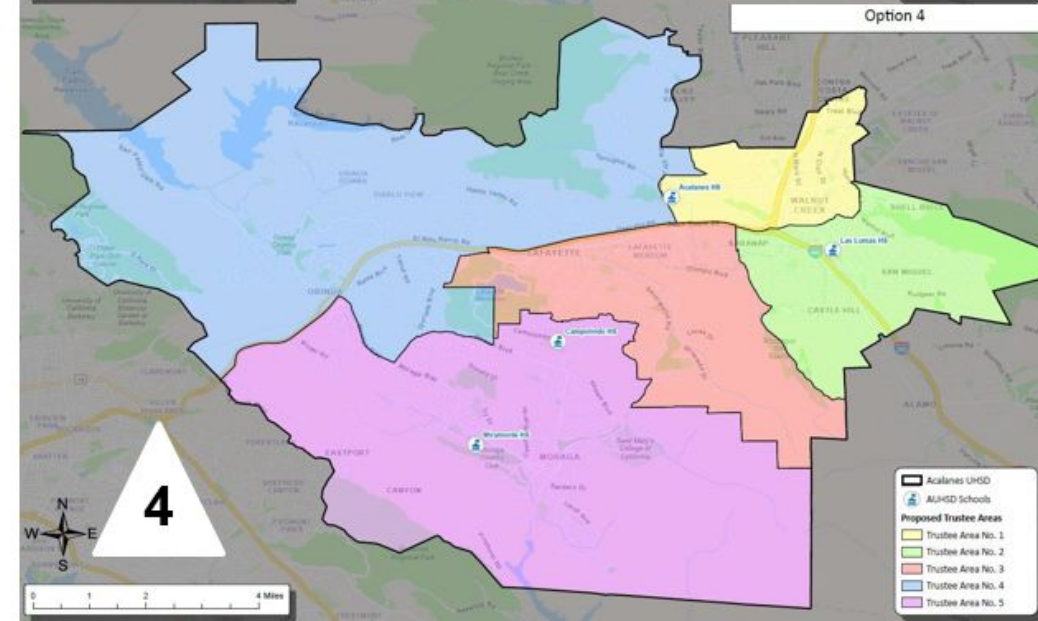
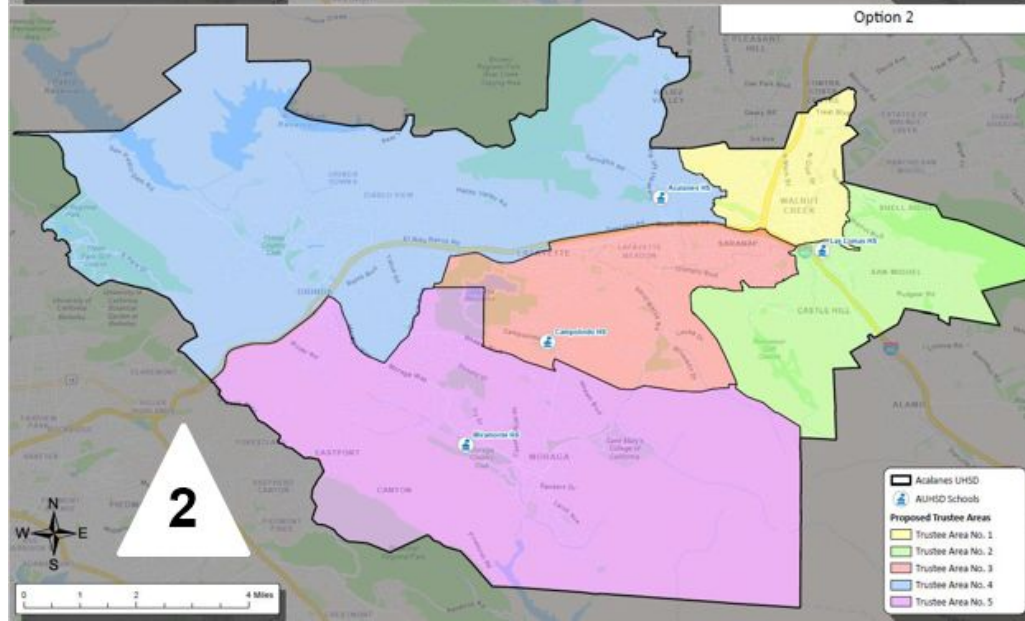
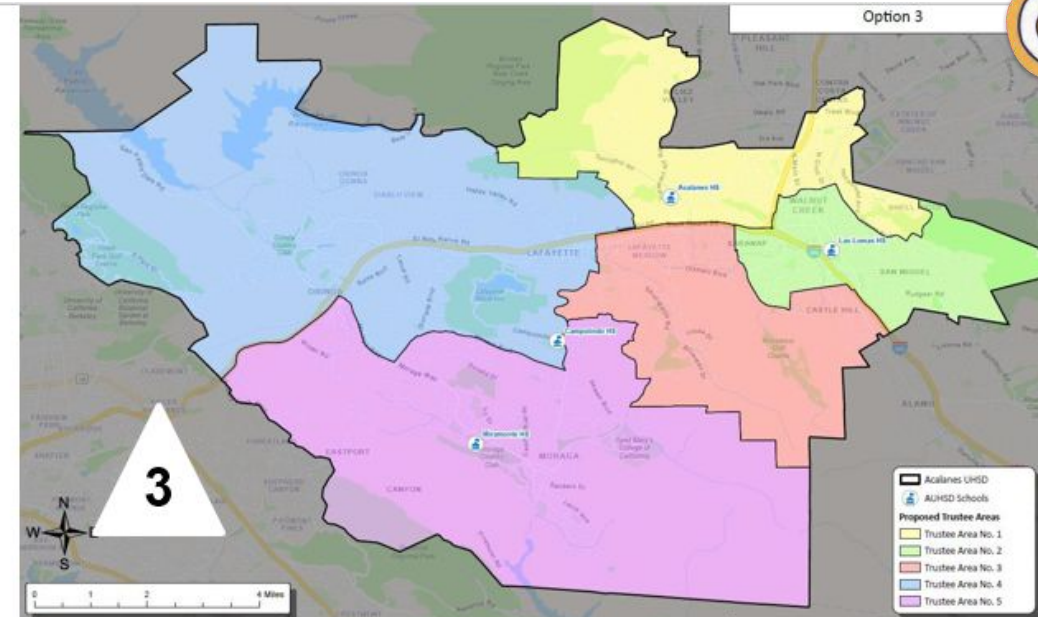
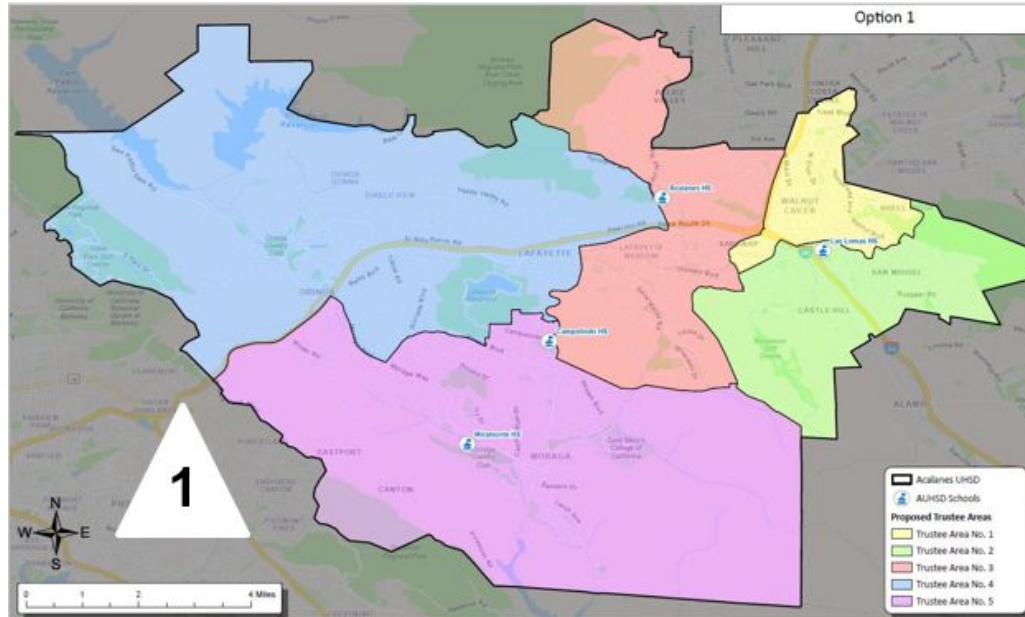
- Order of priority:
  - Contiguous
  - Local Neighborhoods/Communities of Interest
  - City/Census designated places
  - Natural/artificial boundaries
  - Geographical compactness
- Other Criteria for Consideration:
  - Other local considerations
  - May not adopt boundaries for the purpose of favoring/discriminating against an incumbent, political candidate or political party.

# Draft Maps



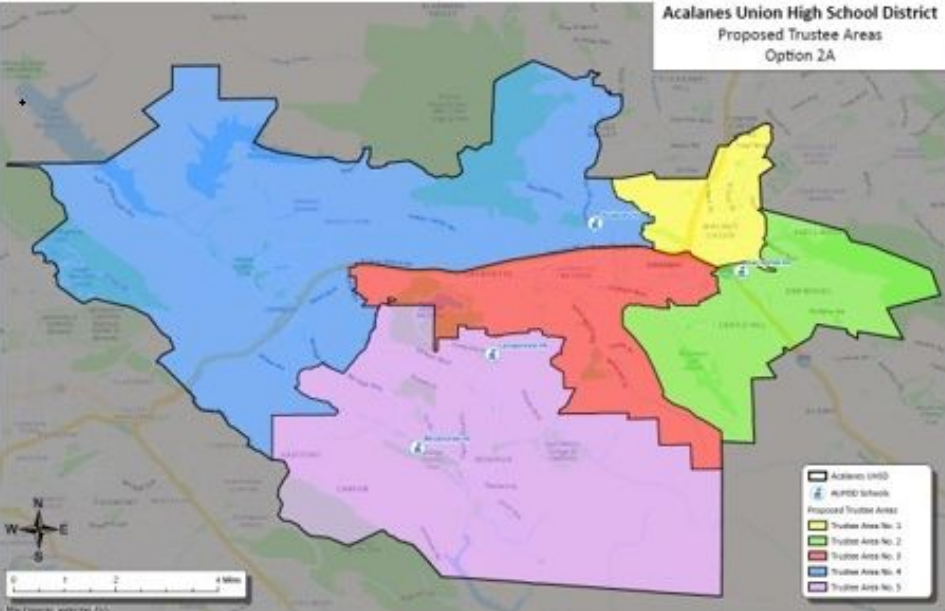
- Seven draft trustee area maps are currently under consideration
  - [DRAFT Trustee Area Map - Option 1](#)
  - [DRAFT Trustee Area Map - Option 2](#)
  - [DRAFT Trustee Area Map - Option 2A](#)
  - [DRAFT Trustee Area Map - Option 2B](#)
  - [DRAFT Trustee Area Map - Option 3](#)
  - [DRAFT Trustee Area Map - Option 4](#)
  - [DRAFT Trustee Area Map - Option 5](#)
- Each map option contains overlays high school attendance area, elementary school attendance areas, and cities/CDPs. Each option also presents demographic data for each trustee area.
- Election sequencing will also be determined by the Board on October 15  
[Election Sequencing Proposal](#)

# Draft Maps Presented for September 3 Public Hearing





# Additional Draft Maps for September 17 Public Hearing



# For More Information...



- [Interactive mapping tool](#)
- [AUHSD Transition to By-Trustee Area Election Method Informational Webpage](#)
- Ask questions through [trusteeareafeedback@auhdschools.org](mailto:trusteeareafeedback@auhdschools.org)
- Reach out to a current Board member or the Superintendent

# Transition from At-Large to By Trustee Area Elections



## Questions